

GALILEO

Galileo LED
by Emanuele Ricci

Galileo is the jewel of the Lumina collection. Galileo's precious crystal shade is the outcome of an extremely precise process of glass making. The refraction quality of the optical glass conveys the maximum possible brilliance of light through the entire shade. Available now with LED source, this new version of Galileo is even more elegant and its light even purer than the earlier halogen series. Galileo is dimmable for energy saving. Galileo LED energy consumption equals to 18W, 8W for Galileo mini LED. A decentralised mount is always included.

Galileo LED
Galileo Mini LED
9 S ↑ W
9 S ↑ W ? [[

Galileo LED



Galileo LED

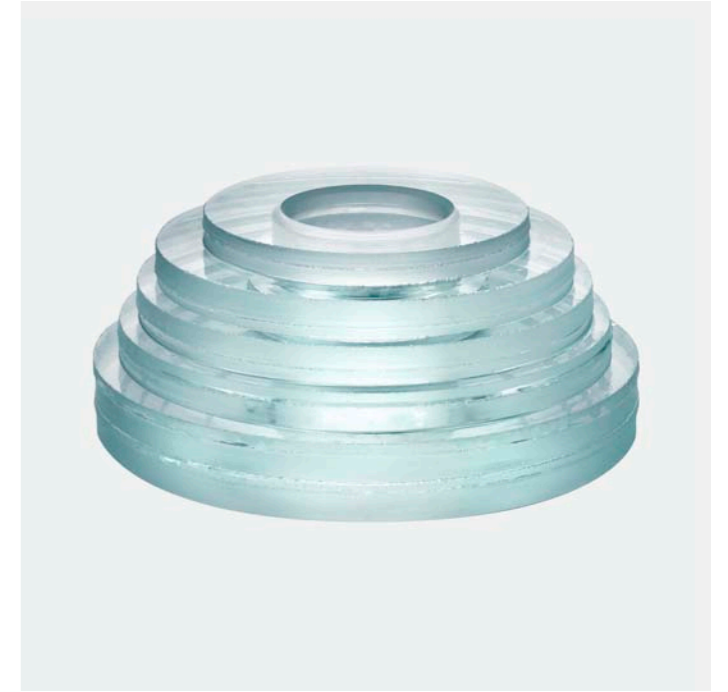
Right: LED light engine





Galileo LED Manufacturing

Above: manufacturing Galileo, first step, shaping and gluing
Below: manufacturing Galileo, final step, turning and polishing.
Galileo's precious body is handmade by master craftsmen. The thick extra-clear sheets of crystal are milled, ground, and pasted to obtain a convex lens which holds, reflects, and conducts the rays of light.



Galileo Mini LED



Galileo LED Sizes

Galileo is available in two versions Standard (Ø20cm) and Mini (Ø12cm).

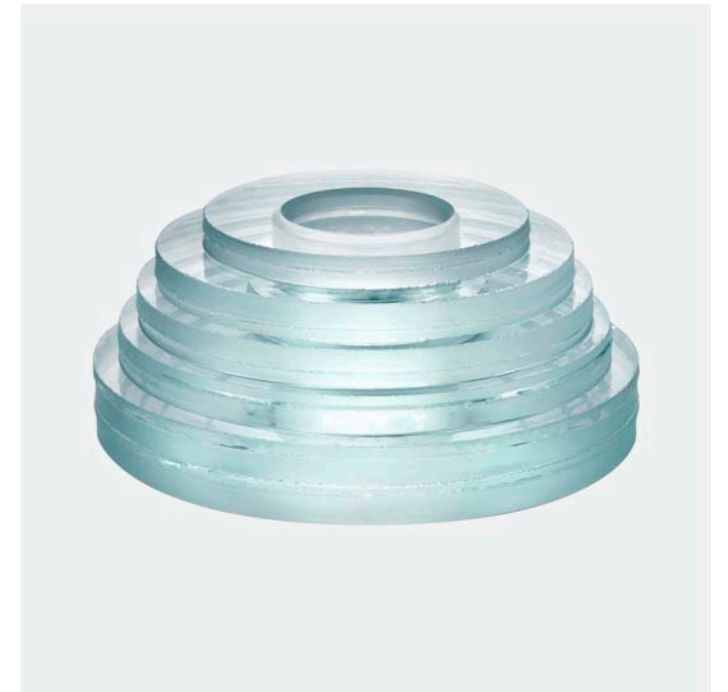
Above: Mini Ø12cm with a single lead cord
Below: Standard Ø20cm with separate cords for hanging and power





Galileo Manufacturing

Above: manufacturing Galileo, first step, shaping and gluing
Below: manufacturing Galileo, final step, turning and polishing.
Galileo's precious body is handmade by master craftsmen. The thick extra-clear sheets of crystal are milled, ground, and pasted to obtain a convex lens which holds, reflects, and conducts the rays of light.



Galileo Mini



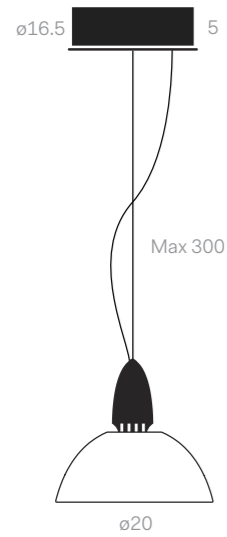
Galileo Sizes

Galileo is available in two versions: Standard (Ø20cm) and Mini (Ø12cm).

Above: Mini Ø12cm with a single lead cord
Below: Standard Ø20cm with separate cords for hanging and power



Galileo specifications



Galileo LED
Dimmable
0–10V or push button

Source
1 × 18W LED
3000K / 1800lm
On request 2700K and
5000K LED is available

Code
380LD

Certification
CE

Finishes
44

Notes
Decentral mount included



Galileo LED Mini
On/Off Switch

Source
1 × 8W LED
3000K / 780lm
On request 2700K and
5000K LED is available

Code
383L

Certification
CE

Finishes
44

Notes
Decentral mount included



Galileo LED Mini
Dimmable
0–10V or push button

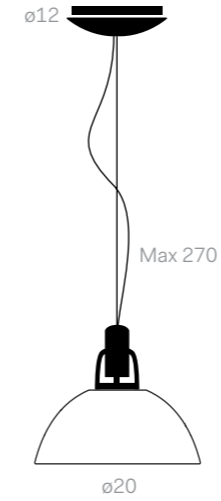
Source
1 × 8W LED
3000K / 780lm
On request 2700K and
5000KLED is available

Code
383LD

Certification
CE

Finishes
44

Notes
Decentral mount included



Galileo
Dimmable

Source
Max 100W
HAL B15d

Code
380

Certification
CE

Finishes
44

Notes
Decentral mount included



Galileo Mini
Dimmable

Source
Max 50W / 12V
HAL GY6.35

Code
383

Certification
CE

Finishes
44

Notes
Decentral mount included



LUMINA Italia SrL, Via Casorezzo 63
20010 Arluno, Milano, Italia
Tel +39 0290 3752, www.lumina.it